

ELST / Inglewood Parking Lot:

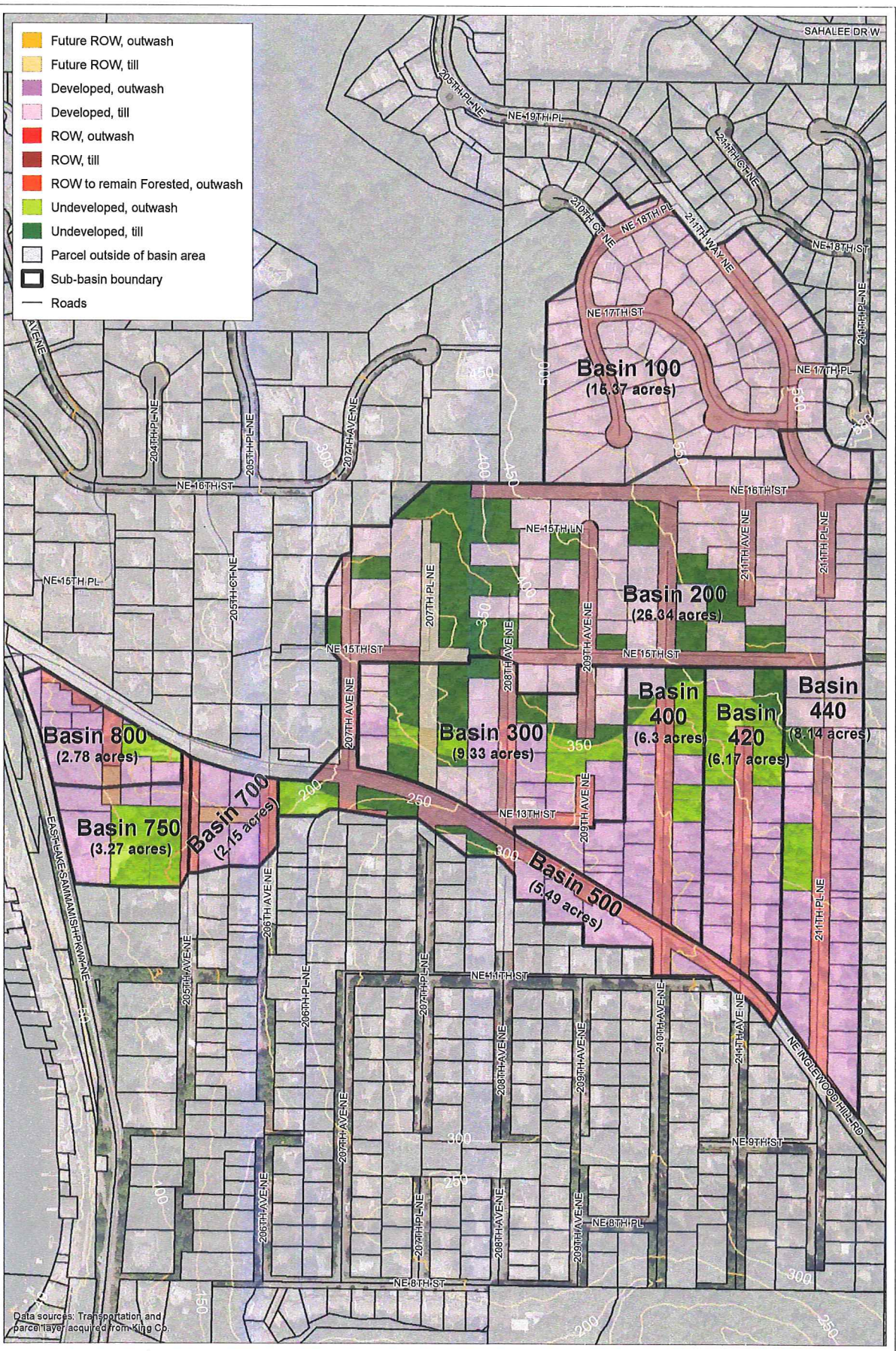
City & County must work together to ensure all drainage paths will be sized for future upland build-out capacity — not just existing.

EXHIBIT NO. 71

For example Inglewood Retrofit for stormwater had A, B, C options. C was to be done, but A/B implemented instead. This runoff flows to potential "new" salmon stream suggest by Bill Way.

Make sure Parking Lot project allows for stormwater runoff to go where OPA shows — attached. Very key to not send unwanted flows or unwanted storm runoff to potential salmon stream. (City Design) 4 pages - color Attached

- Future ROW, outwash
- Future ROW, till
- Developed, outwash
- Developed, till
- ROW, outwash
- ROW, till
- ROW to remain Forested, outwash
- Undeveloped, outwash
- Undeveloped, till
- Parcel outside of basin area
- Sub-basin boundary
- Roads



Data sources: Transportation and Parcel Data acquired from King Co.

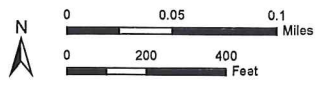
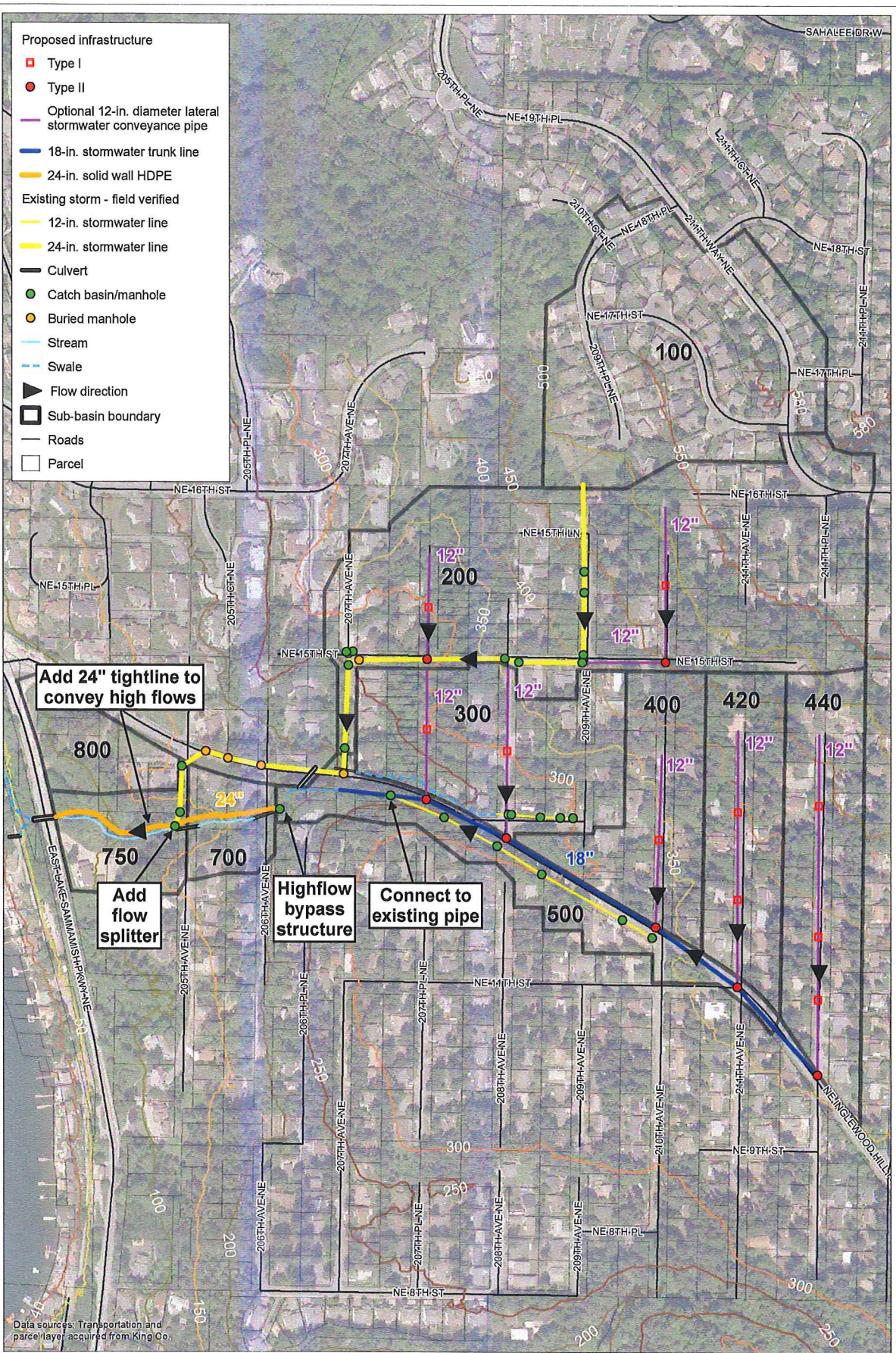


Figure 2. Inglewood basin delineation and land-use analysis

DRAFT

Capacity Planning
1

- Proposed infrastructure**
- Type I
 - Type II
 - Optional 12-in. diameter lateral stormwater conveyance pipe
 - 18-in. stormwater trunk line
 - 24-in. solid wall HDPE
- Existing storm - field verified**
- 12-in. stormwater line
 - 24-in. stormwater line
- Culvert
 - Catch basin/manhole
 - Buried manhole
 - Stream
 - Swale
 - ▲ Flow direction
 - ▭ Sub-basin boundary
 - Roads
 - ▭ Parcel



Data sources: Transportation and parcel layer acquired from King Co.

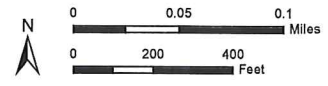
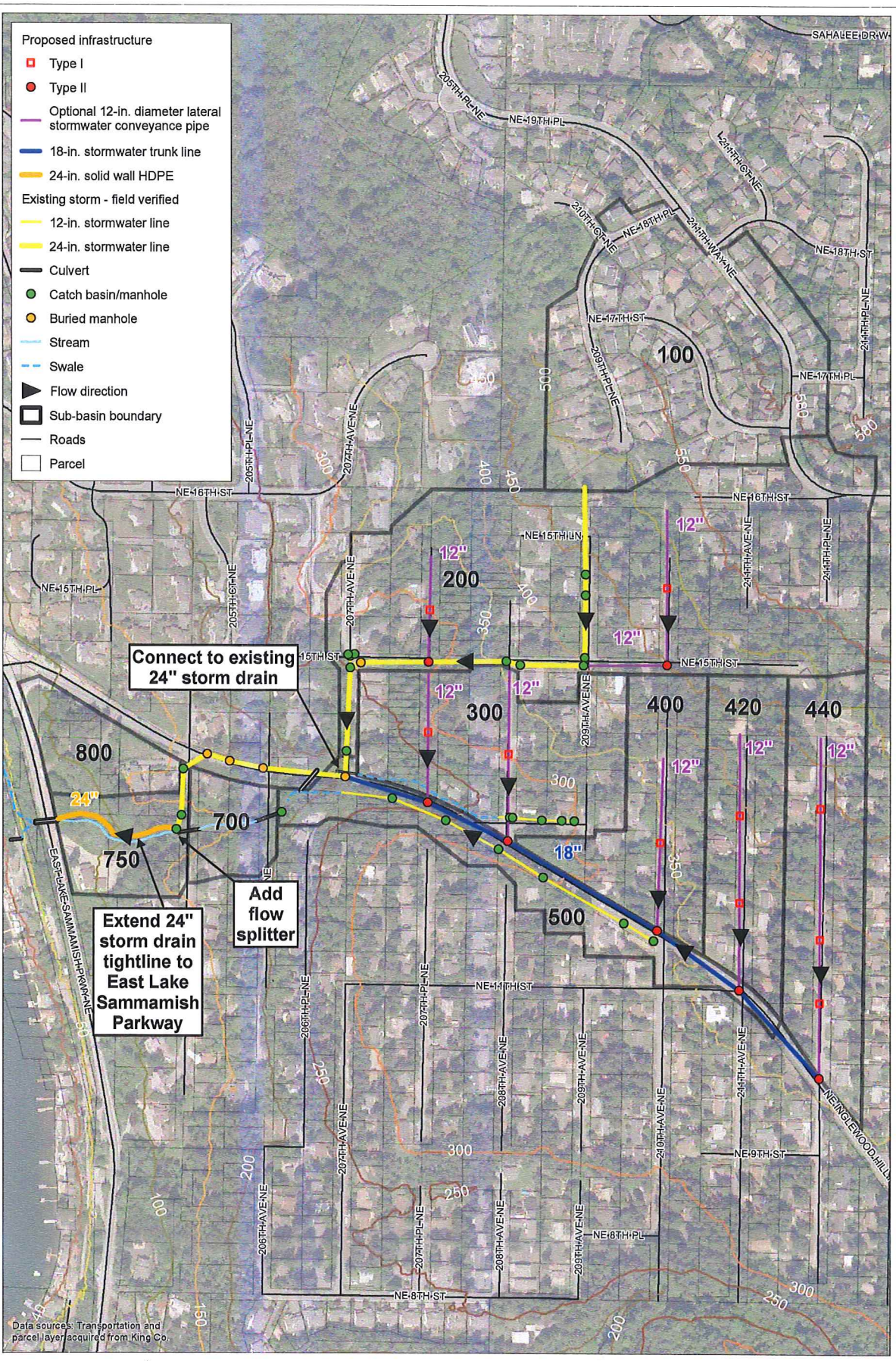


Figure 3. Inglewood Alternative A — keep existing drainage pattern

DRAFT

Option A
2

- Proposed infrastructure
- Type I
 - Type II
 - Optional 12-in. diameter lateral stormwater conveyance pipe
 - 18-in. stormwater trunk line
 - 24-in. solid wall HDPE
- Existing storm - field verified
- 12-in. stormwater line
 - 24-in. stormwater line
- Culvert
 - Catch basin/manhole
 - Buried manhole
 - Stream
 - Swale
 - ▲ Flow direction
 - ▭ Sub-basin boundary
 - Roads
 - ▭ Parcel



Data sources: Transportation and parcel layer acquired from King Co.

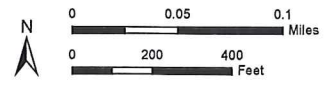
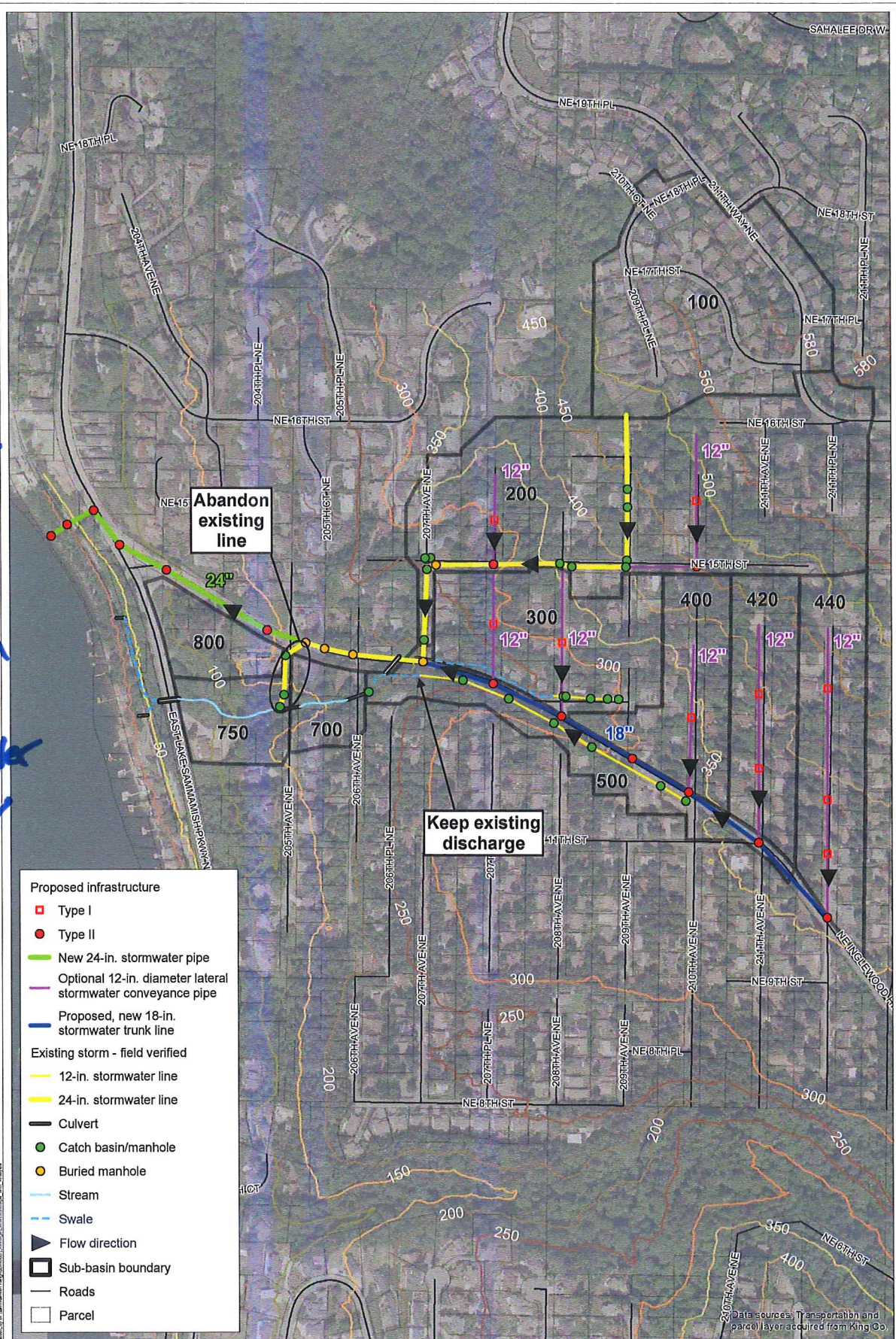


Figure 4. Inglewood Alternative B — connect to existing 24-in. stormwater line

DRAFT

Option B
3

*Implement
 →
 Keep
 location
 →
 Stormwater
 Use for
 future*



- Proposed infrastructure**
- Type I
 - Type II
 - New 24-in. stormwater pipe
 - Optional 12-in. diameter lateral stormwater conveyance pipe
 - Proposed, new 18-in. stormwater trunk line
- Existing storm - field verified**
- 12-in. stormwater line
 - 24-in. stormwater line
 - Culvert
 - Catch basin/manhole
 - Buried manhole
 - Stream
 - Swale
 - ▲ Flow direction
 - Sub-basin boundary
 - Roads
 - Parcel

Figure 5. Inglewood Alternative C — extend 24-in. line down Inglewood Hill Road to King County property

DRAFT

*Option C
 Preferred
 Option
 but not
 implemented*