



City of Sammamish

## Issaquah-Fall City Road Improvements Project

Phase I: 242nd Avenue SE to Klahanie Drive SE

# Welcome

Welcome to the detour and construction planning workshop for the Issaquah-Fall City Road Improvements Project.

## AGENDA

**5:30 p.m. – Welcome, sign-in, find seats**

**5:40 p.m. – Presentation and Q&A**

**6:15 p.m. – Workshop**

- Identify areas of concern during construction
- Brainstorm solutions to manage traffic during construction

**7:40 p.m. – Group report out**

**8:00 p.m. – Event ends**







City of Sammamish

## Issaquah-Fall City Road Improvements Project

Phase I: 242nd Avenue SE to Klahanie Drive SE

# Project Overview

The City of Sammamish is planning to widen Issaquah-Fall City Road from 242nd Avenue SE to Issaquah-Beaver Lake Road.

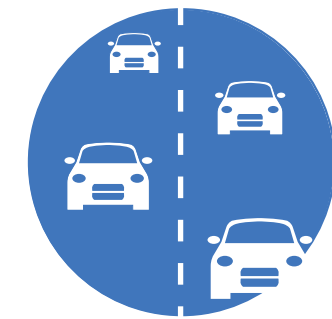
## This project will:



**Improve safety** for drivers, cyclists, and pedestrians along the roadway, and at intersections



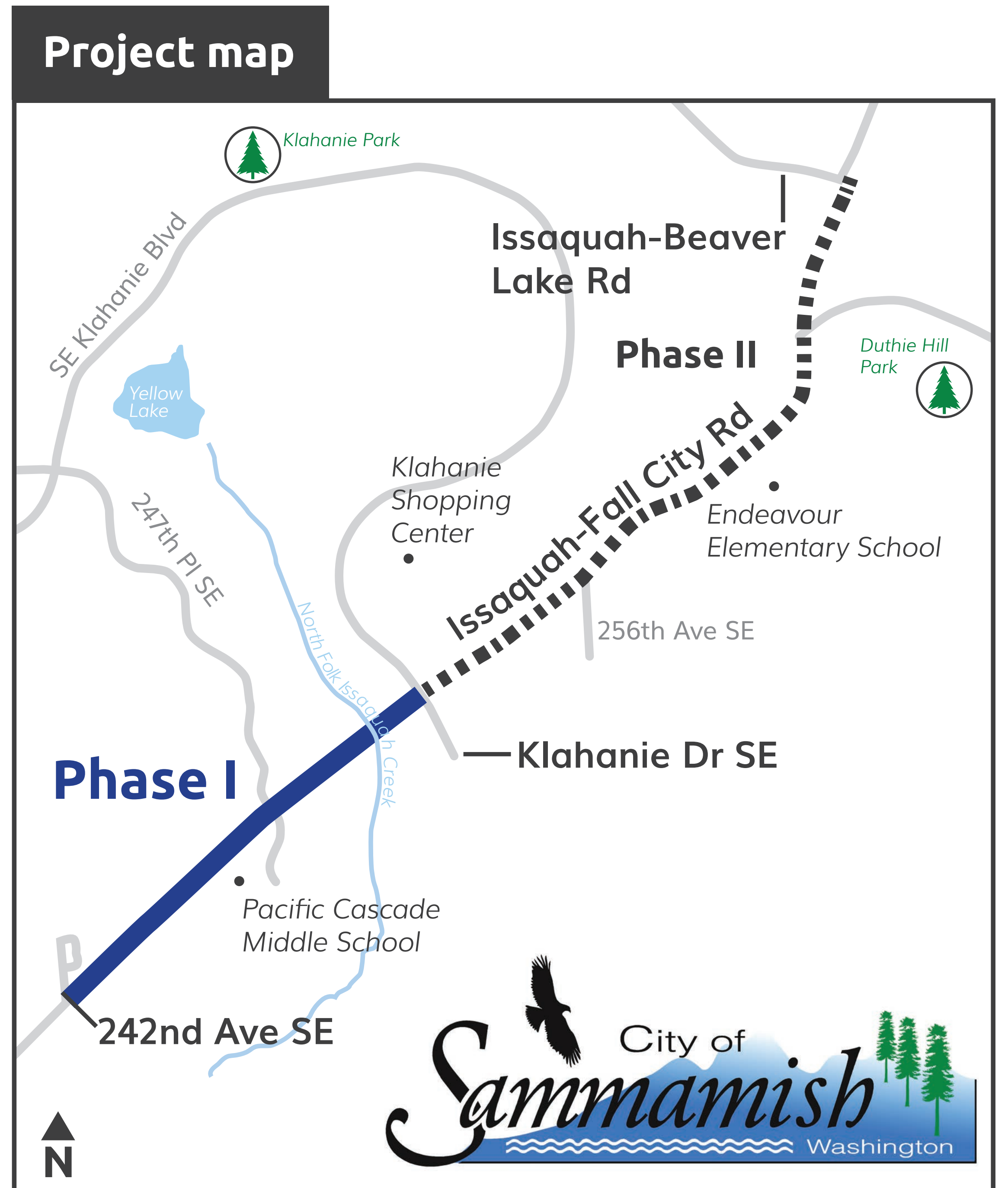
**Improve operations** at intersections



**Increase capacity** with additional travel lanes



**Protect mature trees** and environmentally sensitive areas where possible



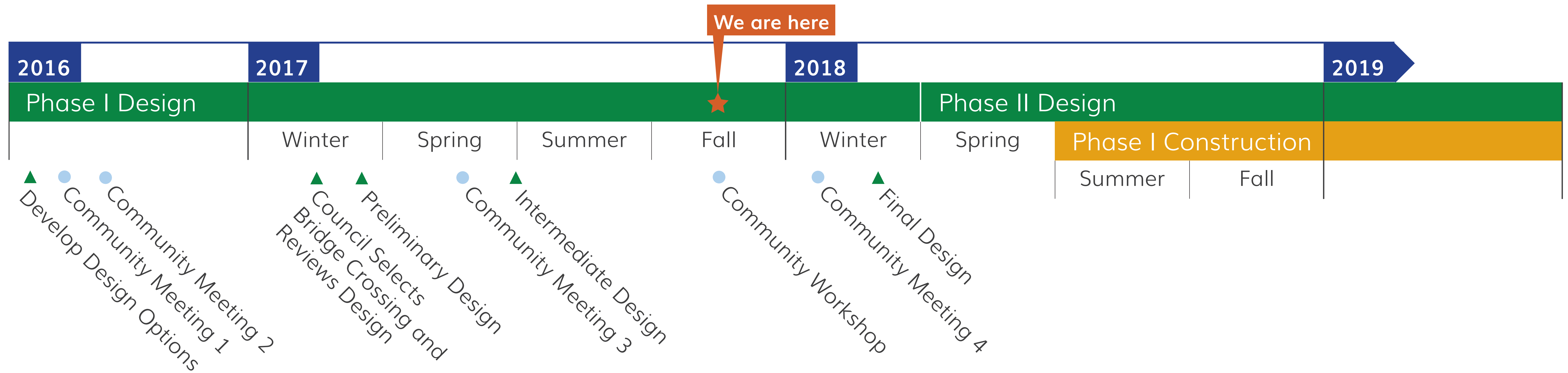


City of Sammamish

# Issaquah-Fall City Road Improvements Project

Phase I: 242nd Avenue SE to Klahanie Drive SE

# Project Schedule



We are here

**Phase II Construction:**  
Anticipated 2021-2022

Community outreach and City Council updates will be ongoing throughout the duration of the project.





City of Sammamish

## Issaquah-Fall City Road Improvements Project

Phase I: 242nd Avenue SE to Klahanie Drive SE

# Roadway Design



*Design shown is preliminary. Exact roadway details, such as width and roundabout locations within the intersection, are still being developed.*

### The design consists of:

- **Two travel lanes** in each direction
- **Two-lane roundabouts** at each intersection (242nd Avenue SE, 247th Place SE, and Klahanie Drive SE)
- **Bridge crossing** where Issaquah-Fall City Road crosses the North Fork Issaquah Creek
- **Raised center median**
- **Buffered bike lane**
- **Separated sidewalks** on both sides of the road between 242nd Avenue SE and 247th Place SE
- **Sidewalk** on the north side of the road between 247th Place SE and Klahanie Drive SE
- **Regrading** to improve sight lines
- **High-intensity Activated crossWalk (HAWK) beacon** at Pacific Cascade Middle School
- **Green infrastructure** to help protect water quality





City of Sammamish

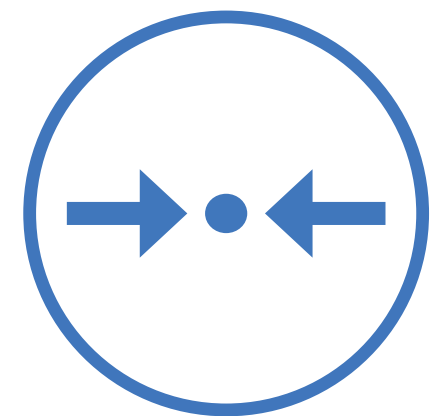
## Issaquah-Fall City Road Improvements Project

Phase I: 242nd Avenue SE to Klahanie Drive SE

# Roundabout Safety

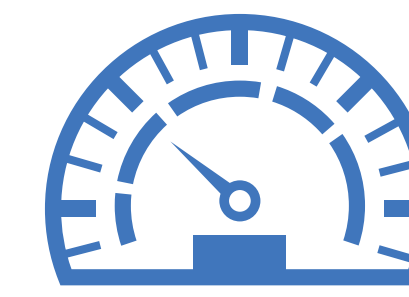


**Reduce injury crashes by 75%** compared with intersections using stop control or traffic signals



**Fewer conflict points**

- 8 at a roundabout
- 32 at a four-way intersection



**Lower speeds** mean shorter braking distances and longer decision-making time



**Reduce average delay time by 50%** for vehicles passing through the intersection

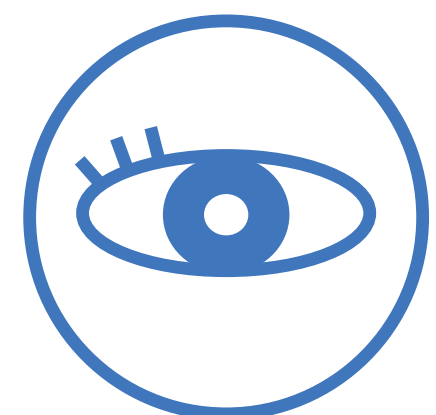
## WHY ROUNDABOUTS ?



**Shorter wait time and crossing distances for pedestrians** because of refuge islands



**Improve the environment and water quality** by reducing paved roadway width



**Higher visibility** of pedestrians in crosswalks



**Improve safety for all users,** including pedestrians and bicyclists





City of Sammamish

## Issaquah-Fall City Road Improvements Project

Phase I: 242nd Avenue SE to Klahanie Drive SE

# Design Benefits



## Safety

- Eliminate left-turn vehicle conflicts; use roundabout as a U-turn
- HAWK signal for safe pedestrian crossing at school entrance
- Buffered bike lanes
- Pedestrian refuge islands at crosswalks
- Raised median to reduce vehicle conflicts
- Separated sidewalks



## Operations

- Two-lane roadway in each direction
- Two-lane roundabouts to keep traffic moving through intersections
- Right-turn slip lanes out of neighborhoods



## Environment

- Minimal widening of roadway to reduce impervious pavement while adding capacity
- Minimize mature tree removal, where possible
- No impacts to Klahanie Trail
- Green infrastructure to help control stormwater



*Design shown is preliminary. Exact roadway details, such as width and roundabout locations within the intersection, are still being developed.*