



City of Sammamish

Issaquah-Fall City Road Improvements Project

Phase I Design: 242nd Avenue SE to Klahanie Drive SE

Community Workshop #1: Envisioning the New Corridor



Thursday, May 12, 2016, 6 – 8 pm
Pacific Cascade Middle School



Meeting Agenda

6:00-6:30 p.m. – Presentation

- Welcome and staff introduction
- Project background and overview
- Time for brief questions and answers
- Explanation of open house stations

6:30-8:00 p.m. – Open house

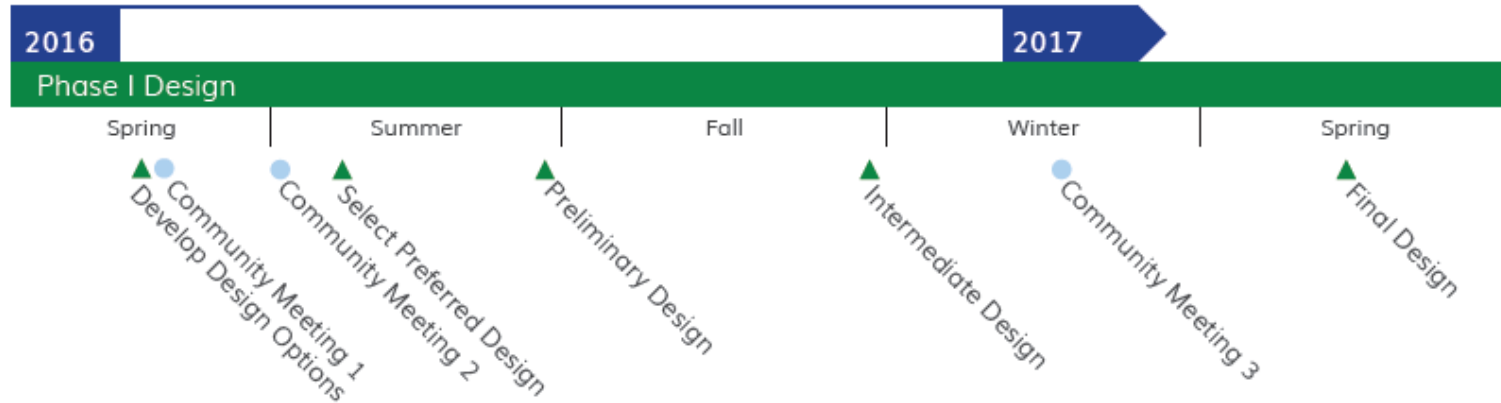
- Visit stations
- Provide feedback
- Ask questions and talk to project staff

8:00 p.m. – Adjourn



Project Timeline

Project schedule



Phase I Construction:
Anticipated 2017/2018

Phase II Design:
Planned 2018/2019

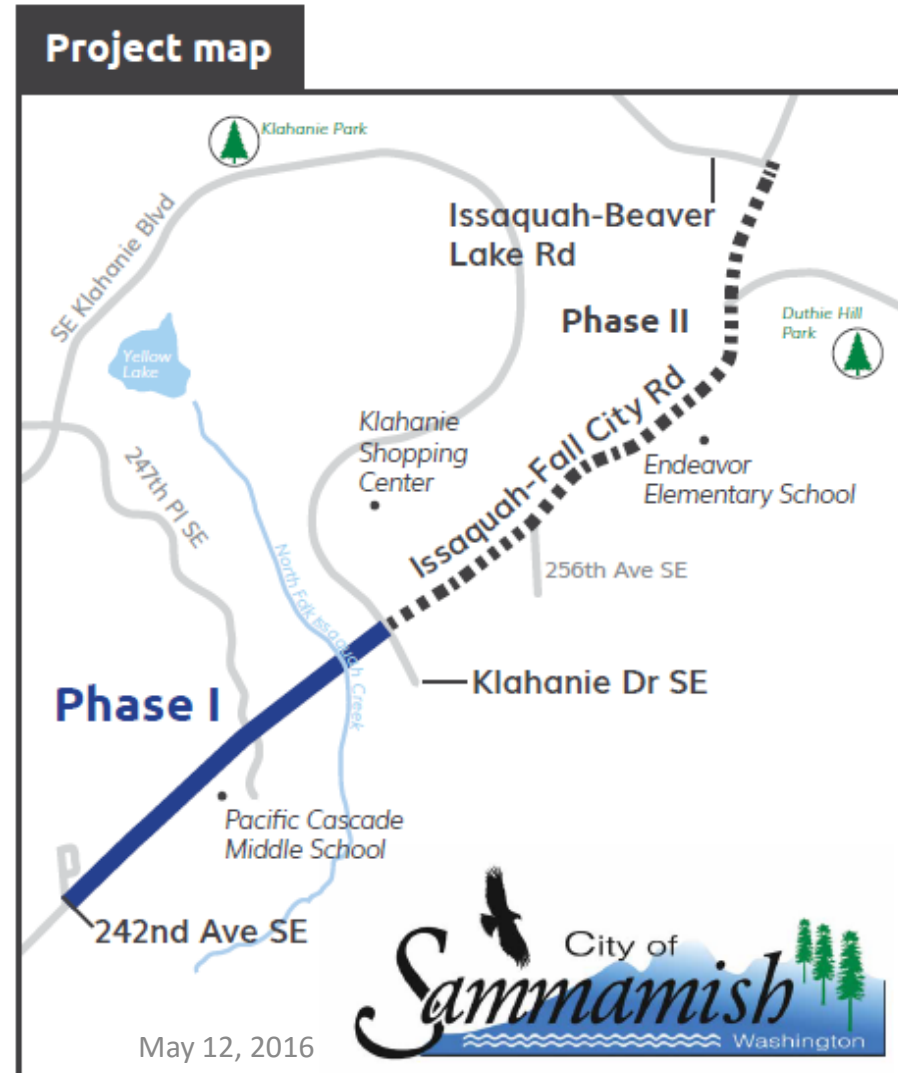
Phase II Construction:
Anticipated 2020/2021

*Community outreach and
City Council updates will
be ongoing throughout the
duration of the project.*



Project Overview

- January 1, 2016 annexation to the City of Sammamish
- Phase I Design: 242nd Avenue SE to Klahanie Drive SE
- City plans to:
 - Improve safety for drivers, cyclists, and pedestrians
 - Improve operations at intersections
 - Increase capacity
 - Protect mature trees and environmentally sensitive areas





Issaquah-Fall City Road

1990 – 9,900 average daily traffic



May 12, 2016



Issaquah-Fall City Road

2011 – 15,800 average daily traffic



May 12, 2016



Issaquah-Fall City Road

2016 – 22,000 average daily traffic



May 12, 2016



Issaquah-Fall City Road Today

- Increase of 6,000 vehicles between 1991 and 2011
- Increase of another 7,000 vehicles between 2011 and 2016
- Traffic delays most significant in morning and afternoon peak commute hours
- 67 collisions between 2011 and 2015
- No fatal collisions or collisions involving bicyclists or pedestrians between 2011 and 2015

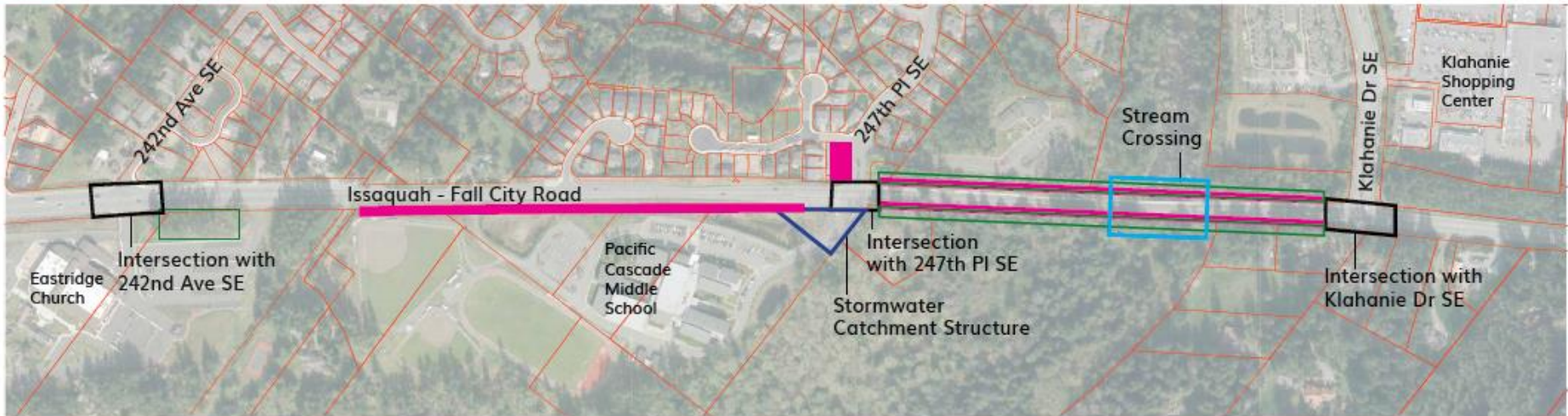


May 12, 2016



Corridor Context

Utilities Area of Mature Trees





Roadway Design

- Add capacity, where possible, by increasing the number of travel lanes
- Improve sidewalk and bike facilities





Intersection Design

- Considering roundabouts or traffic signals
- Key Phase I intersections:
 - 242nd Avenue SE
 - 247th Place SE
 - Klahanie Drive SE





North Fork Issaquah Creek

- Culvert replacement will occur as part of roadway improvements
- The City will seek to minimize environmental impacts
- Cost, environmental impacts, and construction methods will be considered





Questions?



May 12, 2016





Thank you

We want to hear from you! Please join us at the following stations to provide your feedback on the design for the future roadway:

Station 1: Project Overview

Station 2: Corridor Vision

Station 3: Project Area Work Station

Station 4: Existing Conditions

Station 5: Roadway Design

Station 6: Intersections

Station 7: Stream Crossing

Sam Park, Project Manager

spark@Sammamish.us

425-295-0538

May 12, 2016

