



# Pavement Management Program

**Council Study Session  
March 13, 2018**



# Introduction

- Pavement Management → Maintaining our entire roadway network.



Overlay



Ramp Retrofit



Patching

# Pavement Condition Index (PCI)

- PCI ranges from **0** (worst) to **100** (best).
- Tools Used: TransMap and MicroPaver.

## Sammamish Examples:



PCI = 100



PCI = 75



PCI = 50



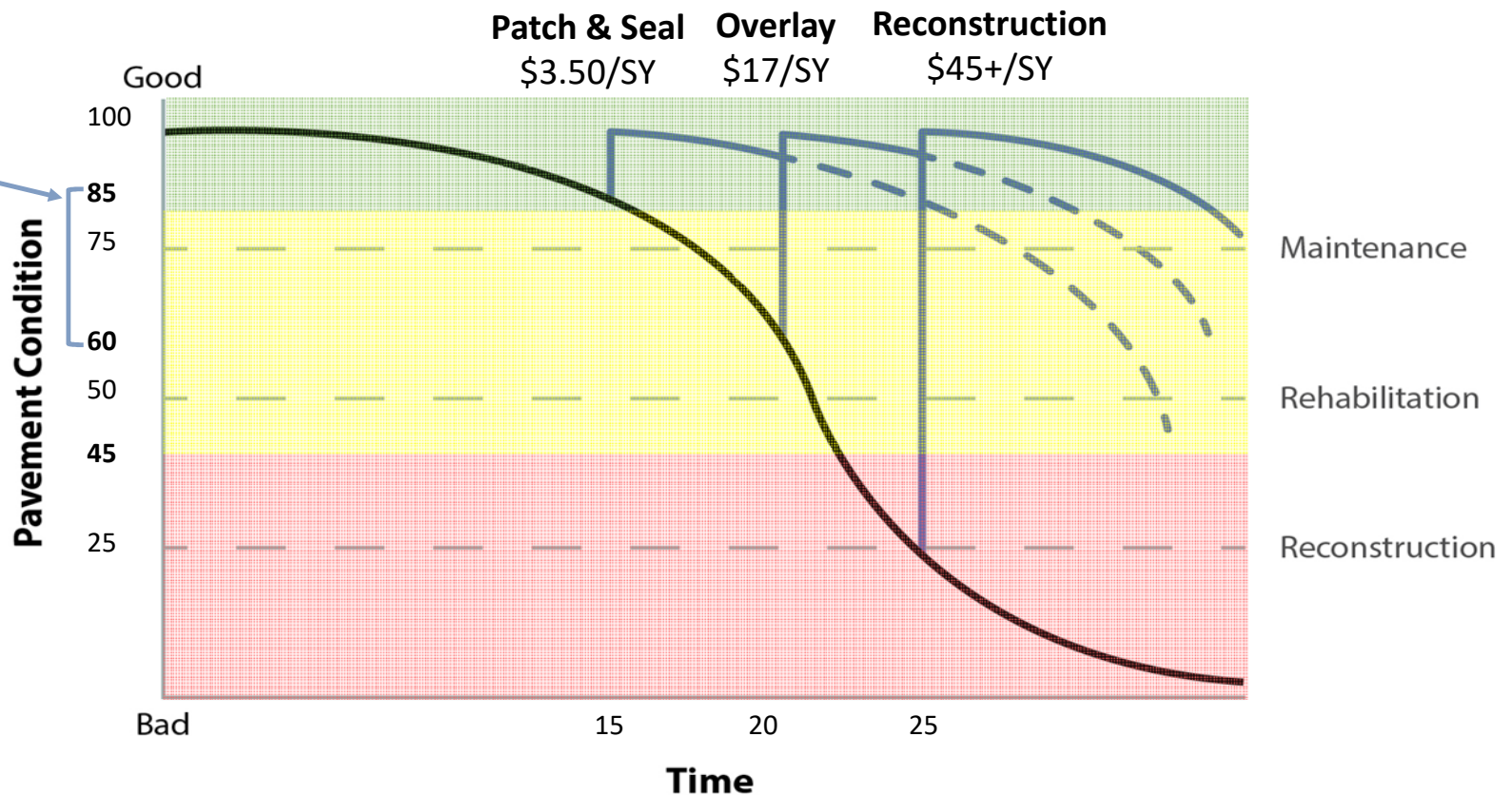
PCI = 25



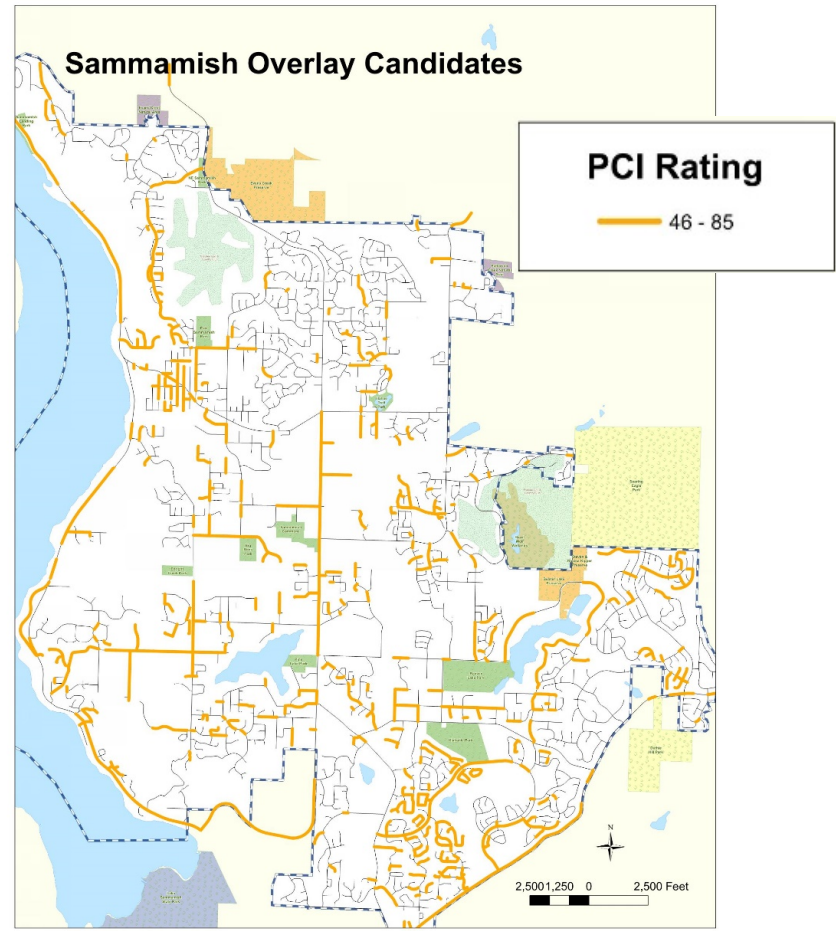
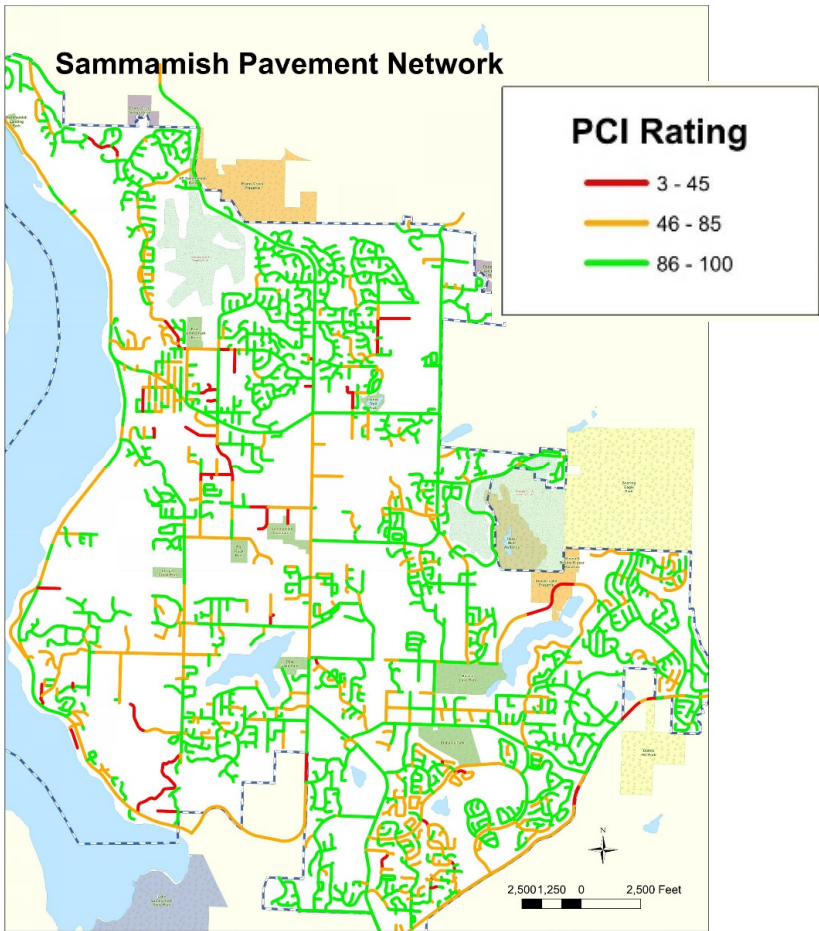
PCI = 3

# Pavement Lifecycle Curve

**GOAL:**  
 Overlay when  
 pavement  
 condition is  
 rated between  
 60-85 for  
 greatest cost  
 efficiency.



# Sammamish PCI Ratings

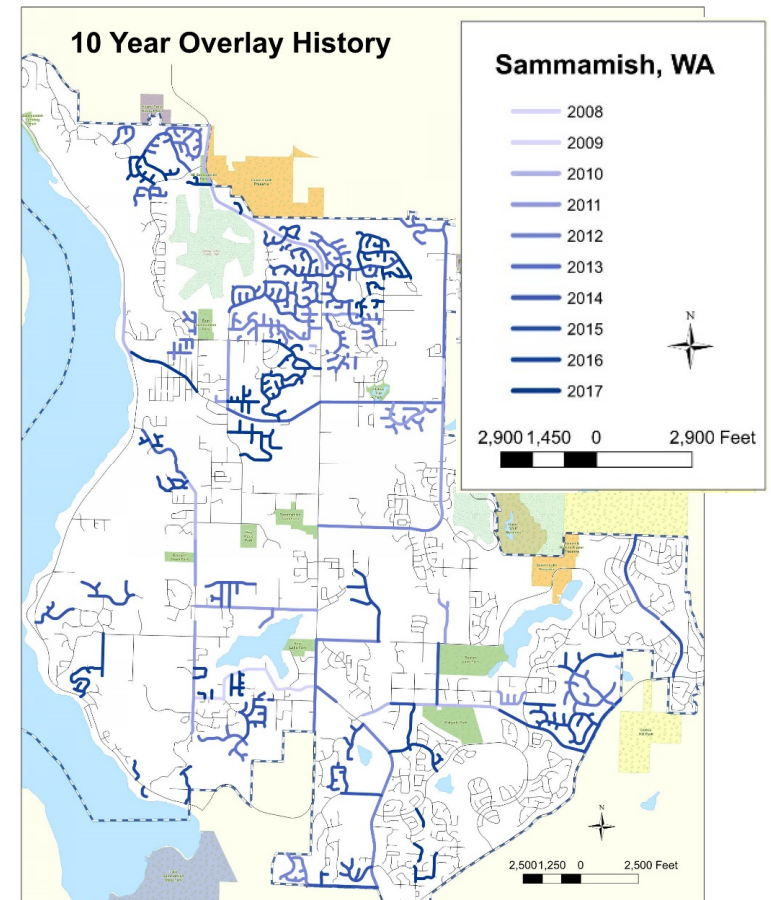


# Sammamish Overlay History

- 72 miles paved since 2008.
  - 35% of current network.
- About 8.5 road miles paved annually since 2010.

## Paving Target:

204 Miles over 20 years  
≈ 10 miles per year



# Pavement Overlay (~\$2.5M)

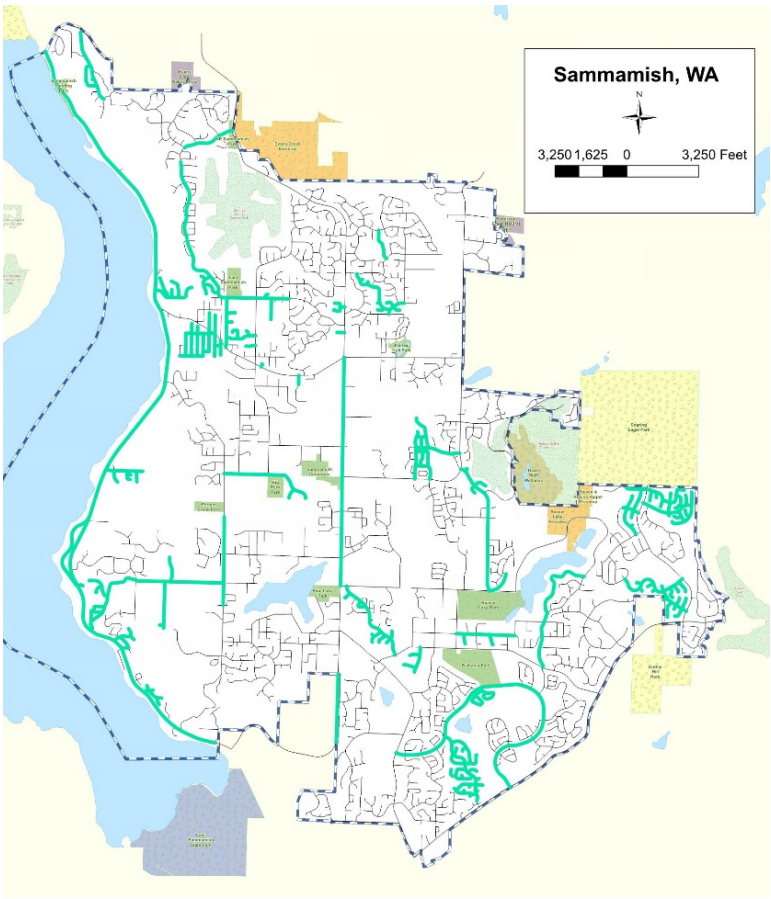
- Paving 1.5" to 2" of Hot Mix Asphalt.
- Additional 15-20 years of pavement life.

## Purpose:

- Drive smoothness → Pleased residents



# 5-Year Overlay Plan



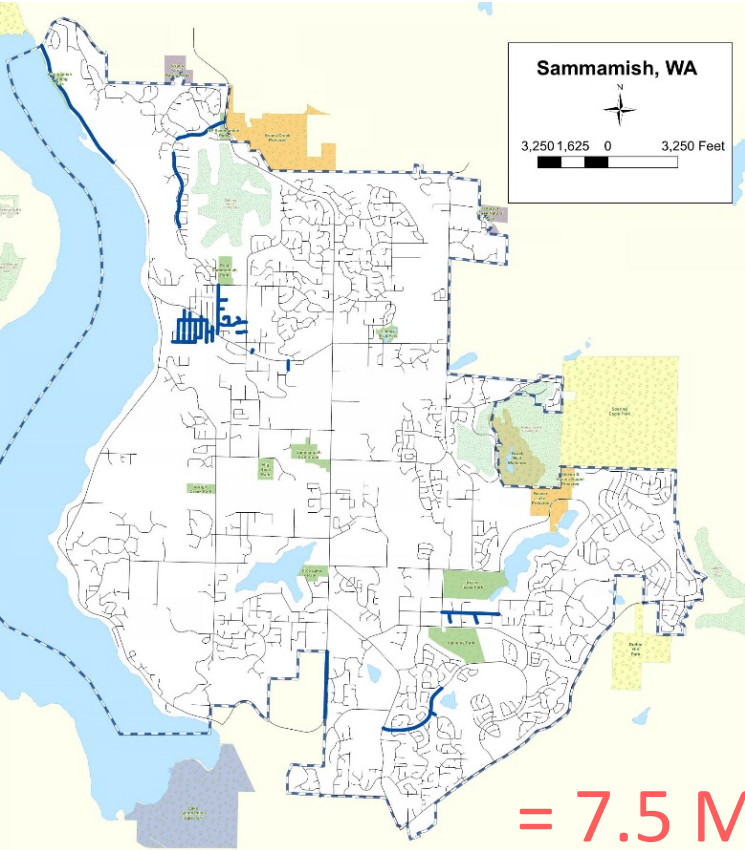
**2018-2022 Overlay Locations**

**= 43 Total Miles**



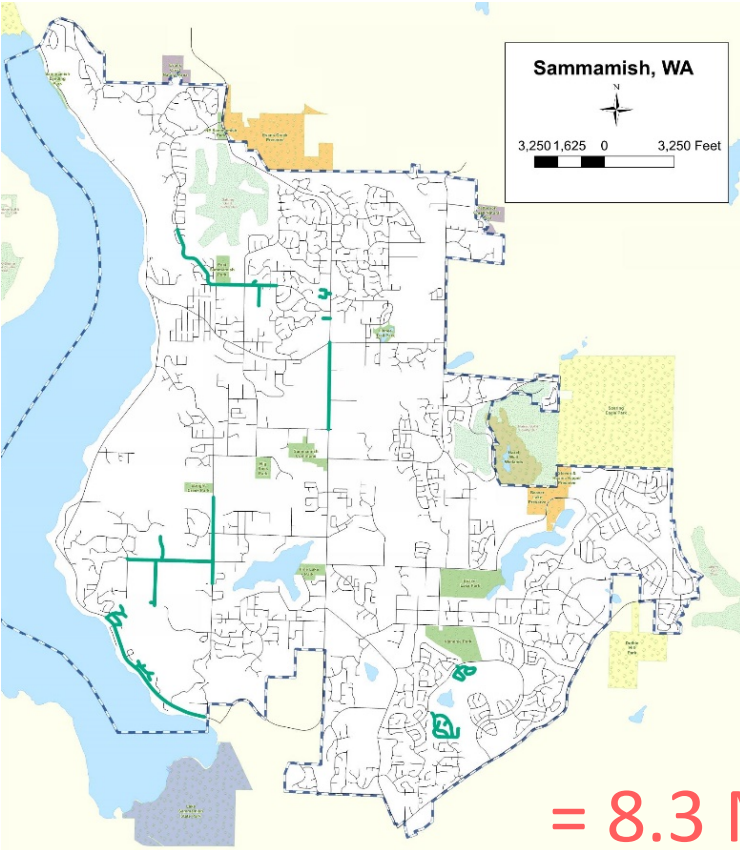
# Overlay Plan for 2018 - 2019

### 2018 Overlay Streets



= 7.5 Miles

### 2019 Overlay Streets



= 8.3 Miles

# Curb Ramp Retrofit (~\$700k)

- 230+ ramps over the past two years.
- Ramps are becoming an increasing part of the program budget.

## **Purpose:**

- Federal ADA Law → ALL ramps must be updated.



# Pavement Patching (~\$200k)

## Purpose:

- Prepare for the following year's overlay.
- Repair locations where failures are localized and no overlay is anticipated.



# Crack Sealing (TBD)

## Purpose:

- Fill is roadway cracks → prolongs life.

