

JANUARY/FEBRUARY 2021

SAMMAMISH NEWSLETTER

The official publication of the City of Sammamish



Happy 2021, Neighbors and Friends

We definitely experienced unexpected and unprecedented times in 2020, and we have seen our community come together to support each other through the uncertainty of COVID-19. At the end of last year, we conducted a community needs assessment survey to assess the immediate and long-term needs of our community as a result of COVID-19. The input from residents is helping to direct funds where they are most needed. Small businesses and nonprofits in Sammamish have already received over \$1 million in support grants the City Council dedicated to help them bounce back. We are in this together and will continue to listen and respond to the needs of our City.

Also, at the end of last year, the City Council and City Staff worked diligently on the 2021-22 biennial budget. The City Council approved the 2021-22 biennial budget submitted by the City Manager with approved amendments. The \$108.1 million two-year general operating budget has a reduction of \$6 million in expenses identified by the City Manager. These reductions are partially offset by two revenue-generating amendments passed by City Council: (1) Using half of the banked capacity accumulated over the past eleven years and (2) approving a 1% increase (the first increase in a decade) over the 2020 tax levy. This accounts for a total increase in property tax revenue of \$3 million for the biennium, which is an increase of approximately \$70 per year in property tax for a home valued at \$900,000. Detailed budget information can be found on the City's website.

In this issue of our newsletter, you will find more information on topics that are important to you. There is a lot to explore about our wonderful city. As always, keep sending me your thoughts and suggestions.

Mayor Karen Moran



IN THIS ISSUE

- 2 Apply for an Arts Grant
- 2 List of Helping Services
- 3 Sammamish Youth Board
- 4 A Look at the Maintenance Operation Center
- 5 Washington Native Plant Society
- 6 How to Recycle Right
- 7 Using My Sammamish App
- 8 City Contact Info



Apply for an Arts Grant

SAND SCULPTURE BY SUE MCGREW

The Arts Commission is offering a NEW grant program that provides funding for organizations, individuals, and youth to deliver exemplary projects in arts education, dance, design, folk and traditional arts, literary arts, media arts, musical theater, multidisciplinary works, theater, visual arts, and all other forms of art or artwork for the residents of Sammamish.

The Commission is looking for grantees that demonstrate high quality arts programming and deliver a positive impact to the community while supporting projects that celebrate Sammamish's creative and cultural heritage, invite mutual respect for differing beliefs and values, and enrich humanity.



The arts grant program provides available funding through four categories: Neighborhood & Community Focus, CityArtist Focus, Educational Focus and Cultural Focus. The grant application portal is open until February 14, 2021. The grant cycle is from March 1, 2021 – March 1, 2022. For more detailed information, please visit www.sammamish.us/government/commissions-boards/arts-commission/grants.

Need Help? List of Services Available

There is help in challenging times. Here's a list of services available to Sammamish residents.

Overall Help

Helpline Center (Information and Referral)
Dial 2-1-1 or 800-621-4636 (Mon-Fri 8 am-6 pm)
24 Hour Crisis Line, 866-427-4747
Teen Link, 866-833-6546, 6-10 pm, 866teenlink.org

Food and Clothing

Issaquah Food & Clothing Bank
179 1st Ave SE, Issaquah, 425-392-4123
www.issaquahfoodbank.org
Open every other week, Tues-Thurs. 12-4 pm

Issaquah Meals Program, Catholic Community Services
180 E Sunset Way, 425-679-0342
Mon-Fri 5-6 pm
Food and Hospitality, Thurs 12-1pm, Sat 5-6 pm, Sun 4-5

HopeLink Redmond Food Bank by appt 425-882-0241

Financial Assistance

Issaquah Community Services, 425-837-3125
St Vincent de Paul Sammamish, 425-391-1178
HopeLink, 425-943-7565

Physical, Mental Health and Substance Abuse

Crosspath Counseling 425-369-1111
Friends of Youth 425-392-6367
HealthPoint 425-882-1697
IKRON of Greater Seattle 425-439-9101
Therapeutic Health Services, 425-747-7892
Youth Eastside Services 425-747-4937

Housing and Shelters

Coordinated Entry for All (CEA), 2-1-1
Catholic Community Services, 206-328-5900
Friends of Youth- The Landing (Youth Shelter)
16225 NE 87th St, Unit A-1, Redmond, 425-449-3868
Congregations for the Homeless, (Men's Shelter)
515 116th Ave NE #150, Bellevue, 425-289-4044
The Sophia Way (Women's Shelter)
3032 Bellevue Way NE, Bellevue, 425-463-6285

Job Assistance

HopeLink, 425-250-3030, hopelink.org
HERO House NW, 425-614-1282
WorkSource, 888-316-5627, worksourcewa.com

Other Services

Eastside Friends of Seniors, 425-369-9120
Eastside Legal Assistance, 425-747-7274
LifeWire (Domestic Violence) 425-562-8840

Getting to Know the Sammamish Youth Board

WRITTEN BY ROHAN KRISHNAN

Rohan is in his fifth year with the Sammamish Youth Board and is the current Chair. He is a senior at Eastlake High School.

The Sammamish Youth Board's 57 members strive to strengthen our community by promoting equality and mutual respect among youth, adults, and government. We hold monthly meetings where we plan community events, hear from guest speakers, and give updates on news in our city and schools.

Last year we organized a lobby day in Olympia to support an initiative mandating bleeding control kits in public schools and planned a series of volunteer events including a blanket-making drive for a local pet shelter.

This year, we adapted by shifting our meetings and events online. With the limited opportunities for volunteer events, our focus on making our generation more civically engaged has increased.

Throughout the month of October, our members created posts encouraging voter registration and voter education that went out through the city's social media.

At our October SYB meeting, we heard from Sammamish City Councilmembers Ross, Stuart, and Treen about pressing issues like COVID-19 and the environment. On October 23rd, we held a virtual town hall catering to the questions and concerns of the Sammamish youth. On our panel were Ms. Ingrid Anderson, Rep. Roger Goodman, Sen. Mark Mullet, and Sen. Lisa Wellman.

These events have shown our generation the importance of local and state governments in creating real change that benefits our communities. As we look forward to 2021, we hope to further incorporate youth input in policy making and organize volunteer events. SYB is just for youth, but we inspire a passion for social good that lasts a lifetime.

To learn more about this formal city program, visit www.sammamish.us and search *Sammamish Youth Board*.



Sammamish Youth Board hosted a virtual town hall with state legislators in October 2020.

Metro's Community Van

Riders can schedule one time or recurring trips up to two hours away. Cost is a Metro fare.

Volunteers at lower risk for COVID-19 are needed.

Never pay gas or toll charges. All COVID-19 safety precautions are being taken to limit spread.



Visit connect.sammamish.us/mobility-hub or call Rori Kirkpatrick at (425) 295-0646.

A Look at the City's Maintenance Operation Center

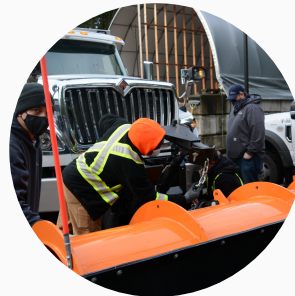
This is the team's first "snow and ice" meeting of the season. Getting trucks, plows and sanders ready for whatever the weather gives us. This year, the team has adjusted to COVID-19 precautions, requiring the crew to work solo or in small teams. They also thoroughly sanitize vehicles at the end of each shift.



Rain, snow, sleet or ice, this is the team that is working to keep our roadways drivable.



Preparing trucks and plows for winter weather. Thank you to the team for your service to the community.



Get to Know the Washington Native Plant Society

INTERVIEW WITH JOY WOOD, CERTIFIED ECOLOGICAL RESTORATION PRACTITIONER

Can you give us a brief background on WNPS and its work in Sammamish?

We have a co-operative program between the Washington Native Plant Society and the City of Sammamish where we train master native plant stewards. They are trained in native plant identification and advocacy and how to do ecological restoration work. They then proceed to carry out an ecological restoration project from beginning to end.

The tricky part is that restoration doesn't ever end because there's always more to do. We've got stewards who were trained in 2007, 2010, 2014 and most recently, 2019 working in the City of Sammamish.

You mentioned that your stewards are in the middle of something. Can you tell us what that is?

Part of the rigorous training is learning about invasive plants that disrupt the ecosystem services that are provided by native plants. Since January of this year, they've been doing a thorough removal of invasive plants at a section of East Sammamish Park and a section of Evans Creek Preserve. They've cleared enough area now that they are going to begin planting and installing native plants!

Wow, that sounds like a lot of work.

Yes! And even more so in 2020 due to the pandemic. We usually invite community volunteers to help out and join the fun. Unfortunately we weren't able to because of limitations on group gatherings. The stewards been having to do a lot of the work just on their own. But they persevered and they're getting a lot done. They are still clearing a lot of area and they look forward to having community volunteers once we get through this pandemic. There's still room to install a lot of native plants – the fun part!

What would you say is the biggest invasive plant problem we have in Sammamish?

If I just went by what I have observed at these two parks, I would say it's Himalayan blackberry, and English ivy. I would be especially cautious of English ivy in Sammamish, because when it crawls up trees, it can top load the trees and make them really heavy and dangerous. In wind storms or extremely breezy days, it can cause trees to fall over because they get so top heavy when the ivy gets so thick at the top of the trees. It's important to pull the ivy from the bottom of the tree.

For more info, search "Noxious Weed" at www.kingcounty.gov/services/environment



How to Recycle Right

It's important to recycle right. Below is a list from Republic Services of items that should be placed on top of your recycle bin, or be scheduled for pickup. For more details, visit www.republicservices.com/recycle-guide.

Place these materials on top of your recycling cart.

Fluorescent Tubes and Bulbs

Wrap tubes in newspaper and secure with tape. Place bulbs in a sealed clear plastic bags.

Household Batteries

Place button and alkaline batteries in sealed clear plastic bag. Place rechargeable and non-rechargeable batteries in separate bags

Used Cooking Oil

Put in clear, screw-top plastic jugs.

Scrap Metal

Rigid Plastic

Call Republic Services at (206) 777-6441 for pickup.

Small Appliances

Microwave ovens, toasters, etc.

Large Appliances

Refrigerators, dishwashers, etc.

Limit 3 large appliances total per each household from 2017-2025.

Large Rigid Plastics

Coolers, and lawn furniture

Large Scrap Metal

All ferrous and non-ferrous metal that is free of wood, plastic, rubber, dirt and other contaminants

Wood Scraps (3ftx3ftx3ft)

Clean, unpainted and untreated wood

How to prepare items for your recycle bin.

- No food waste, liquid or plastic bags
- DO NOT bag recyclables; leave loose
- Put additional recyclables in sturdy bins, boxes, large paper bags, or 32-gal. cans marked "Recycle" next to your recycling cart; not to exceed 60lbs each
- Flatten cardboard
- Empty, clean and dry materials only

How To Use the My Sammamish App

The My Sammamish app gives you a way to quickly and easily report issues such as potholes, damaged street signs, and other local problems that need attention. The app can be used for a variety of other requests such as street maintenance, streetlight requests, damaged trees, and others. You can also track the status of your submissions or view reports from other community members.

How do you report an issue or request?

1. First, you will need to download the app. Simply search *My Sammamish* in the App Store or Play Store and download to your mobile device.
2. To report a new issue or submit a request, select the orange plus sign in the app.
3. You can then submit a photo for your report if you have one. If you don't have a photo, simply select *No Photo*.
4. The app uses GPS to recognize your location or you can enter your location manually.
5. You will then see a menu of common issues to select from for your report.
6. Answer a few questions to add helpful details to your report. The questions are all related to the category that you selected.
7. Click *submit* and you'll receive an immediate confirmation that your report was received. You'll receive a follow-up message once the report has been assigned.



See Other Issues Submitted

Click the Issues icon to view a map or list of issues that have been reported. Green are open issues that have been acknowledged and blue are closed issues. You can also read or add a comment about issues.

Create a Profile

If you create a profile on the My Sammamish App you will stay updated and get notices on all the important information.

Other Things to do with My Sammamish

The app has handy links to the City of Sammamish website, calendar of city events, weekly eNews and more.

Your Collection Date is Changing



Beginning March 1, 2021

Your recycle, garbage and compost collection day will change. Look for a notice from Republic Services in the coming weeks announcing your new collection day.

Questions? Visit
republicservices.com/sammamish





801 228th AVE SE
Sammamish, WA 98075

2021 SAMMAMISH CITY COUNCIL



Karen Moran
Mayor
kmoran@sammamish.us



Christie Malchow
Deputy Mayor
cmalchow@sammamish.us



Jason Ritchie
Councilmember
jritchie@sammamish.us



Kent Treen
Councilmember
ktreen@sammamish.us



Chris Ross
Councilmember
cross@sammamish.us



Ken Gamblin
Councilmember
kgamblin@sammamish.us



Pam Stuart
Councilmember
pstuart@sammamish.us

You can email the entire City Council at citycouncil@sammamish.us

City of Sammamish Offices

801 228TH AVE SE, SAMMAMISH, WA 98075 · 425-295-0500 · WWW.SAMMAMISH.US

City Staff

Dave Rudat
City Manager

Lita Hachey
City Clerk

Dan Pingrey
Sammamish Police Chief

Jeff Clark
EF&R Fire Chief

Aaron Antin
Finance Director

Jim Hominiuk
IT Director

Jeff Elekes
Public Works Director

David Pyle
Community Development
Director

Anjali Myer
Parks, Recreation and Facilities
Director

City Resources

Police Non-Emergency
(206) 296-3311

Eastside Fire & Rescue
(425) 313-3200

King County Sheriff
(206) 263-9133

WA State COVID Call Center
1 (800) 525-0127

King County Animal Control
(206) 296-7387

Garbage - Republic Services
(425) 646-2400

Sammamish Permit Center
(425) 295-0531

**Sammamish Plateau Water
and Sewer**
(425) 392-6256

**NE Sammamish Water and
Sewer**
(425) 868-1144

City Notices

Have an issue or concern?
Use the *My Sammamish* app
on your smartphone.

Have an emergency?
Dial 911

Receive Email and Text Alerts
To subscribe to the City of
Sammamish email and text
alerts and updates go to
www.sammamish.us and
select *Join Our Mailing List*.

**Newsletter suggestions or
concerns?**
Contact the Front Desk at
(425) 295-0500

This newsletter is produced
and printed locally in
Sammamish on recyclable
paper. All rights reserved.

Save the Date
Virtual Lunar New Year Celebration, February 12 - 16
Virtual Variety Show Series 3rd Edition - Coming February/March
More information will be at www.sammamish.us near event dates.